



technical data type LILI LED

LILI, the LI near LIghting:

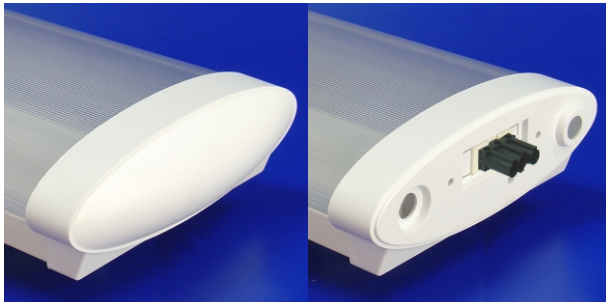
- The fitting consists of a white metal back plate, a white metal gear tray, a plastic extruded frosted diffuser and standard white plastic injected endcaps.
- The cover guarantees an efficient direct/indirect light.
- The plastic diffuser is snap-in mounted on the metal backplate and is easy removable without any tool.
Material : PMMA (frosted)
- **Optional** :- Convex endcap
 - In-line version Midcap (not for small !)
 - Version for LED tubes is also possible.



Electrical specifications:

- Individual or "in-line" luminaires (max 16A).
- 3000, 4000 K with CRI of min. 80
- 80.000h L80 B50 at Ta.max
- MacAdam 3 SDCM

- **Optional** :- DALI driver
- MOTION DETECTOR
- EMERGENCY Module



Option: Convex Endcap
(PS high impact)
(IP 40)

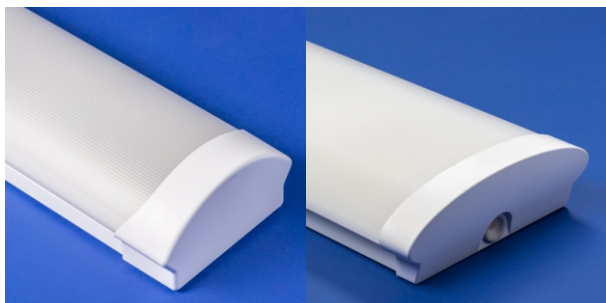
"Midcap" for in-line
assembly (only for WIDE)
(IP 40)

SMALL:

| Length | Power* | Flux** | Ta.max |
|--------|--------|---------|--------|
| 630 | 12 W | 1300 lm | 35°C |
| 630 | 20 W | 2500 lm | 27°C |
| 1200 | 18 W | 2600 lm | 35°C |
| 1200 | 36 W | 5400 lm | 27°C |
| 1500 | 47 W | 6900 lm | 35°C |
| 1500 | 58 W | 8200 lm | 27°C |

WIDE:

| Length | Power* | Flux** | Ta.max |
|--------|--------|---------|--------|
| 1200 | 25 W | 3640 lm | 35°C |
| 1200 | 31 W | 4300 lm | 30°C |
| 1200 | 36 W | 5010 lm | 27°C |
| 1500 | 30 W | 4380 lm | 35°C |
| 1500 | 41 W | 5700 lm | 30°C |
| 1500 | 47 W | 6570 lm | 27°C |

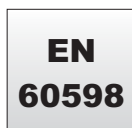


SMALL

WIDE



Easy access
(no tools necessary)



16.02.2024

* Total power consumption of LED's and driver.

** Luminous flux of fitting @ 25°C for 840
(correction factor 0.95 for 830)

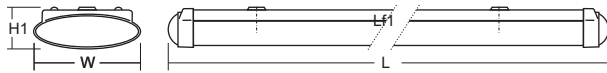
Luminous output and electrical load
have an initial tolerance of
+/- 10 % from nominal.



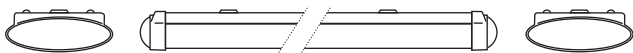
technical data type LILI LED

| LILi LED SMALL | L | W | H1 | Lf1 | Lf3 | Kg |
|----------------|------|-----|----|------|-----|-----|
| 630 | 630 | 110 | 60 | 498 | - | 1,5 |
| 1200 | 1210 | 110 | 60 | 800 | 710 | 2,1 |
| 1500 | 1500 | 110 | 60 | 1000 | 910 | 3,0 |

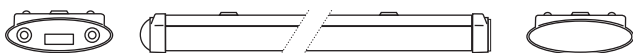
| LILi LED WIDE | L | W | H1 | Lf1 | Lf3 | Kg |
|---------------|------|-----|----|------|-----|-----|
| 1200 | 1293 | 208 | 77 | 800 | 710 | 4,0 |
| 1500 | 1550 | 208 | 77 | 1000 | 910 | 4,4 |



LiLi



LiLi Mid-End



LiLi Mid-Mid

